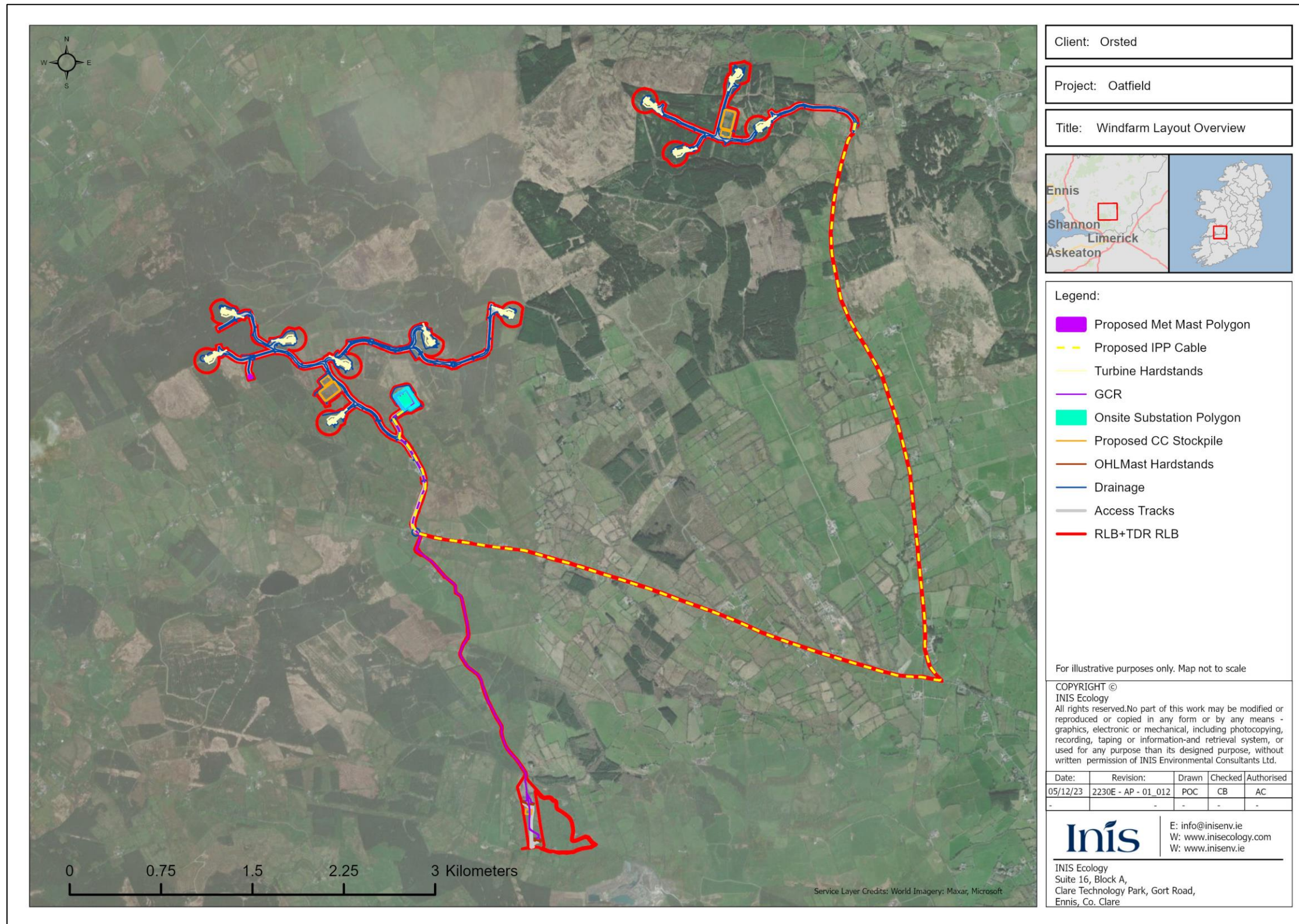


## **APPENDIX 7.4: FIGURES**

---

Figure 7.1: Study Area



Client: Orsted

Project: Oatfield

Title: Windfarm Layout Overview



- Legend:
- Proposed Met Mast Polygon
  - Proposed IPP Cable
  - Turbine Hardstands
  - GCR
  - Onsite Substation Polygon
  - Proposed CC Stockpile
  - OHL Mast Hardstands
  - Drainage
  - Access Tracks
  - RLB+TDR RLB

For illustrative purposes only. Map not to scale

COPYRIGHT ©  
 INIS Ecology  
 All rights reserved. No part of this work may be modified or reproduced or copied in any form or by any means - graphics, electronic or mechanical, including photocopying, recording, taping or information and retrieval system, or used for any purpose than its designed purpose, without written permission of INIS Environmental Consultants Ltd.

Date:	Revision:	Drawn	Checked	Authorised
05/12/23	2230E - AP - 01_012	POC	CB	AC
-	-	-	-	-

**inis** | E: [info@inisev.ie](mailto:info@inisev.ie)  
 W: [www.inisecology.com](http://www.inisecology.com)  
 W: [www.inisev.ie](http://www.inisev.ie)

INIS Ecology  
 Suite 16, Block A,  
 Clare Technology Park, Gort Road,  
 Ennis, Co. Clare

Service Layer Credits: World Imagery: Maxar, Microsoft



Figure 7.2: Proposed Development Habitat Map, Eastern DA

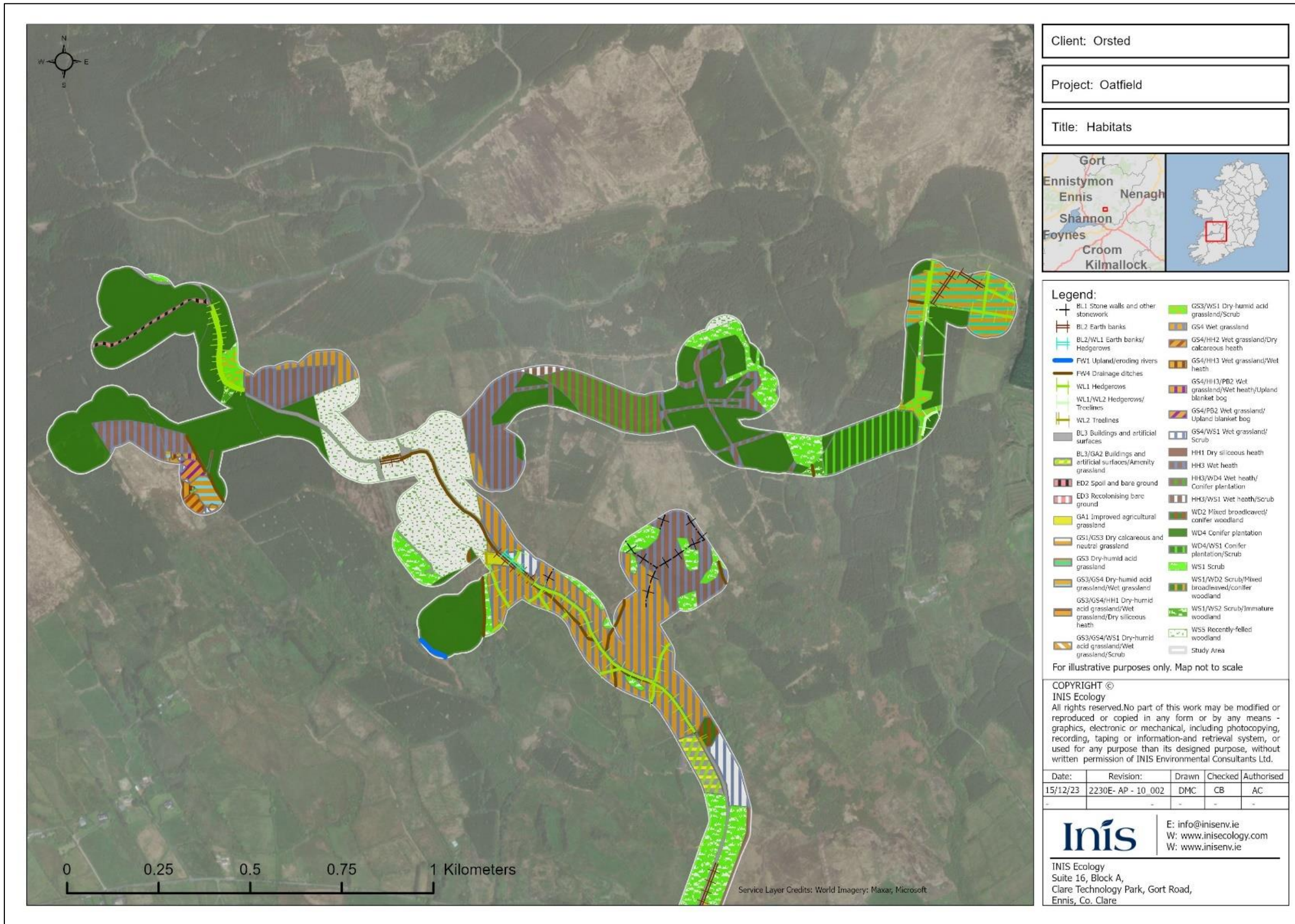




Figure 7.3: Proposed Development Habitat Map, Western DA

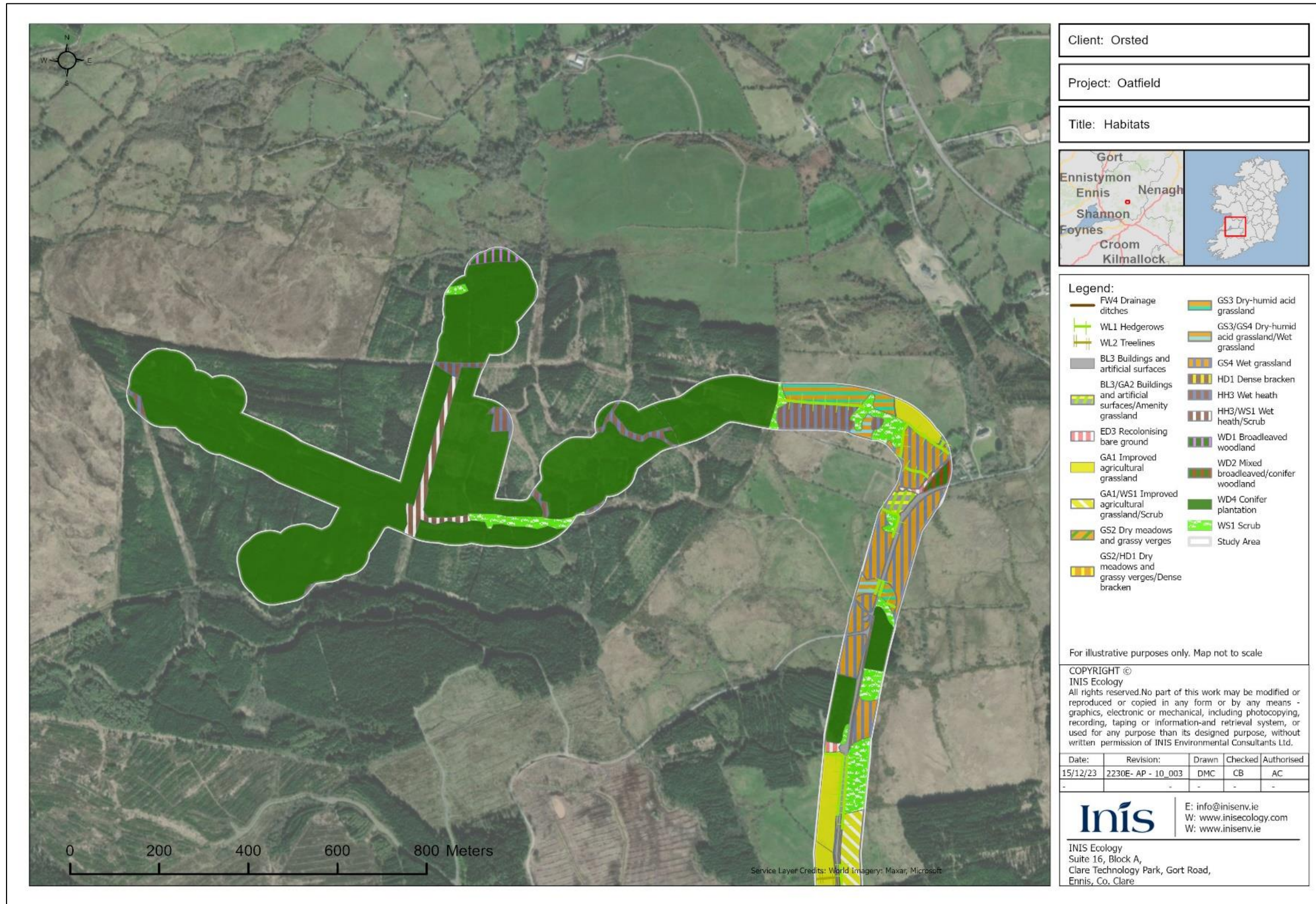




Figure 7.4: IPP Connection route/TDR



Client: Orsted

Project: Oatfield

Title: Habitats

**Legend:**

- BL1 Stone walls and other stonework
- BL2 Earth banks
- FW4 Drainage ditches
- WL1 Hedgerows
- WL1/WL2 Hedgerows/Treelines
- WL2 Treelines
- BL3 Buildings and artificial surfaces
- BL3/GA1 Buildings and artificial surfaces/Improved agricultural grassland
- BL3/GA2 Buildings and artificial surfaces/Amenity grassland
- BL3/GA2/WDS Buildings and artificial surfaces/Amenity grassland/Scattered trees and parkland
- ED3 Recolonising bare ground
- GA1 Improved agricultural grassland
- GA1/WS1 Improved agricultural grassland/Scrub
- GS2 Dry meadows and grassy verges
- GS2/HD1 Dry meadows and grassy verges/Dense bracken
- GS3/HH1 Dry-humid acid grassland/Dry siliceous heath
- GS4 Wet grassland
- HD1 Dense bracken
- WD1 Broadleaved woodland
- WD2 Mixed broadleaved/conifer woodland
- WD4 Conifer plantation
- WS1 Scrub
- WS3 Ornamental/non-native shrub
- Study Area

For illustrative purposes only. Map not to scale

COPYRIGHT ©  
INIS Ecology  
All rights reserved.No part of this work may be modified or reproduced or copied in any form or by any means - graphics, electronic or mechanical, including photocopying, recording, taping or information-and retrieval system, or used for any purpose than its designed purpose, without written permission of INIS Environmental Consultants Ltd.

Date:	Revision:	Drawn	Checked	Authorised
15/12/23	2230E- AP - 10_003	DMC	CB	AC
-	-	-	-	-

**Inis**  
E: info@inisenv.ie  
W: www.inisecology.com  
W: www.inisenv.ie

INIS Ecology  
Suite 16, Block A,  
Clare Technology Park, Gort Road,  
Ennis, Co. Clare

Service Layer Credits: World Imagery: Maxar, Microsoft



Figure 7.5: IPP Connection route/TDR

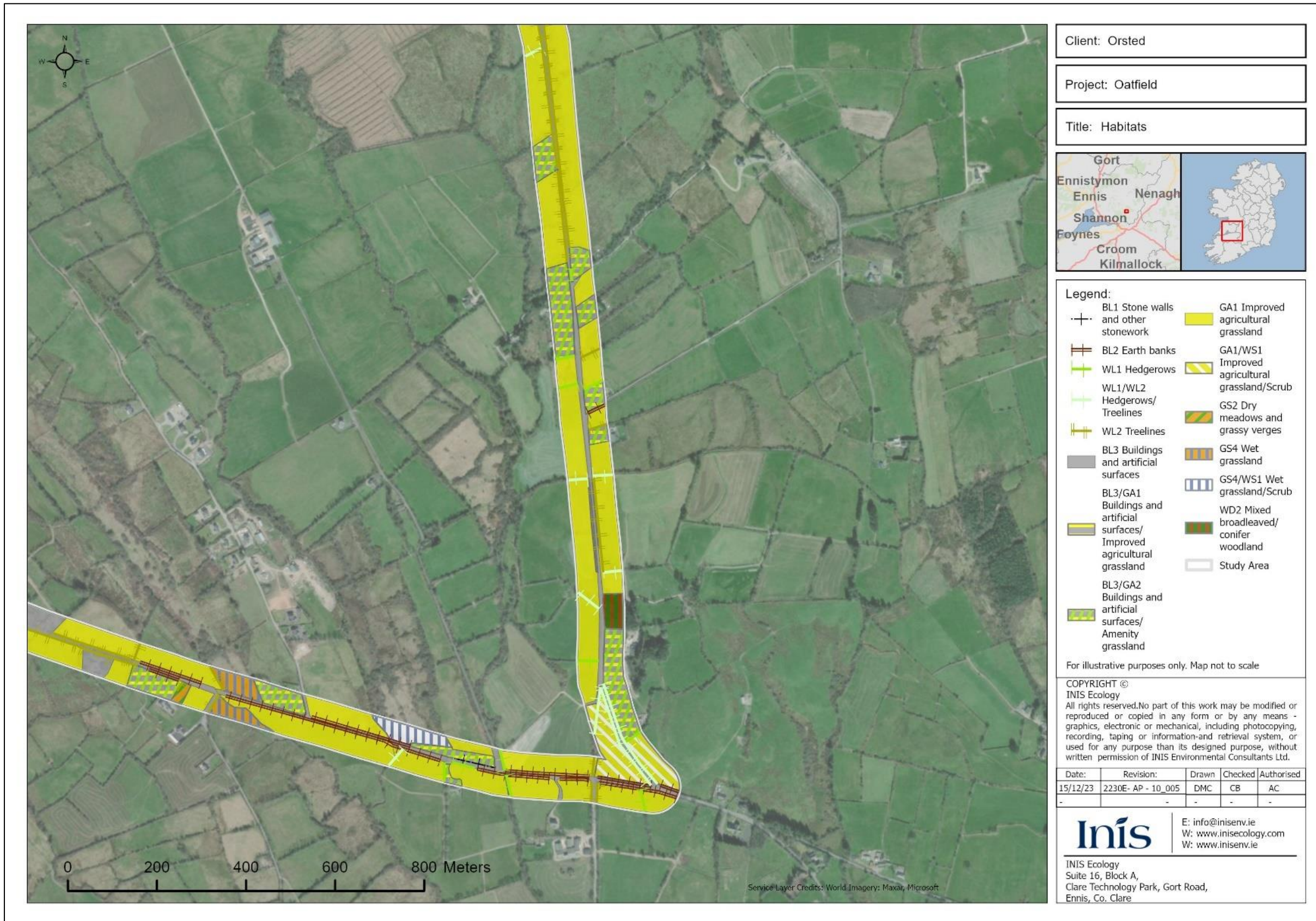




Figure 7.6: IPP Connection route/TDR

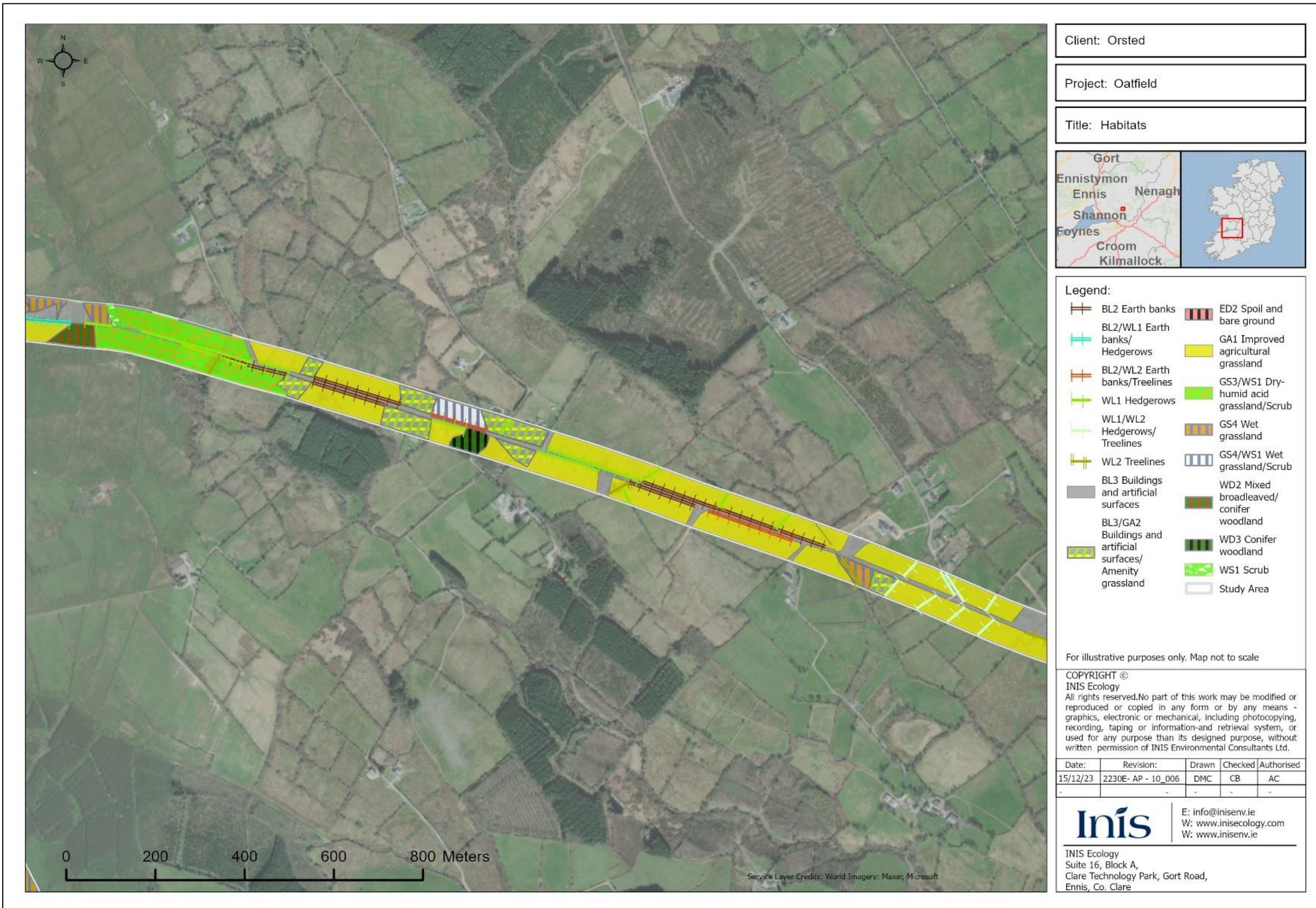




Figure 7.7: IPP Connection route/TDR/Grid connection route

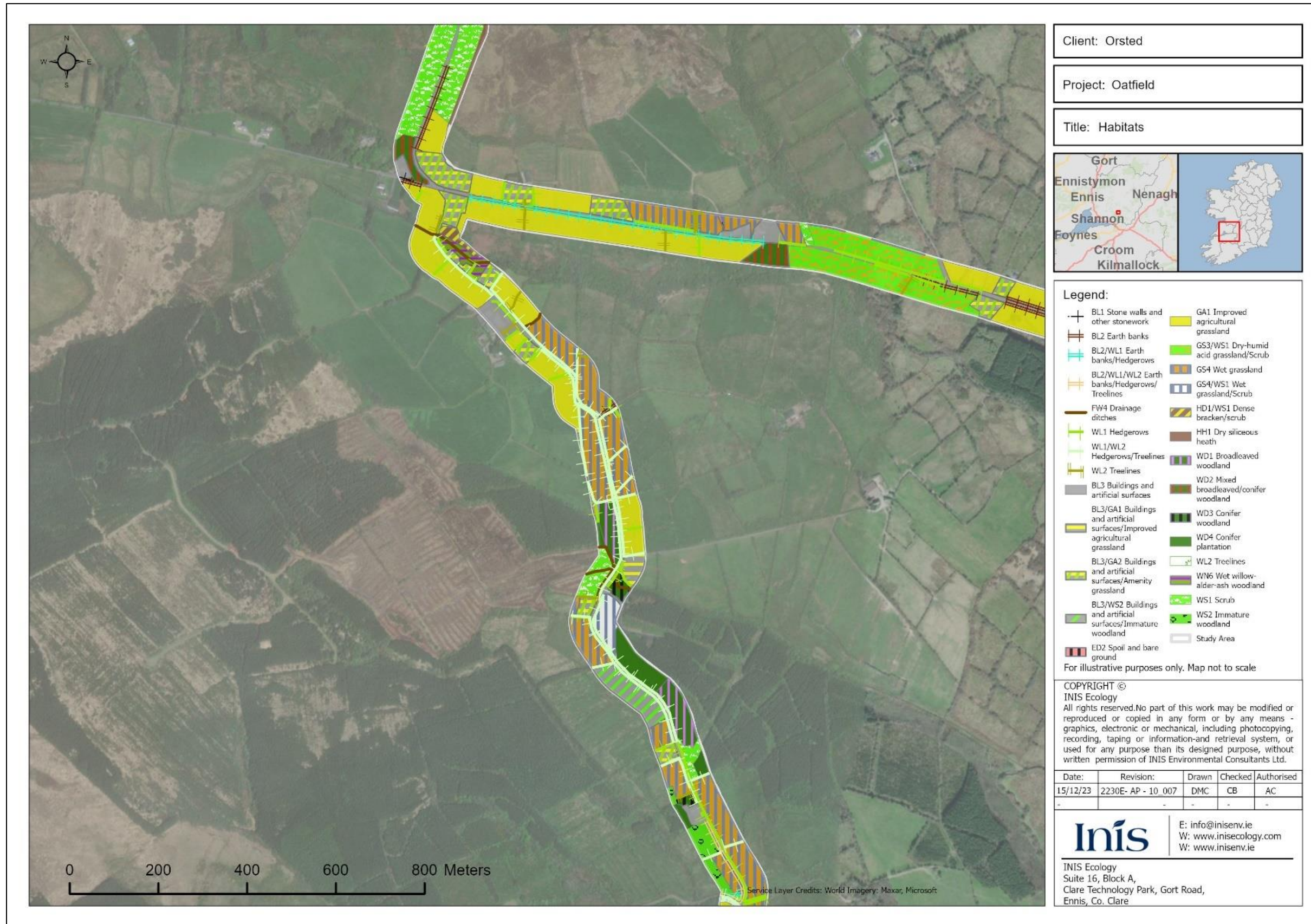
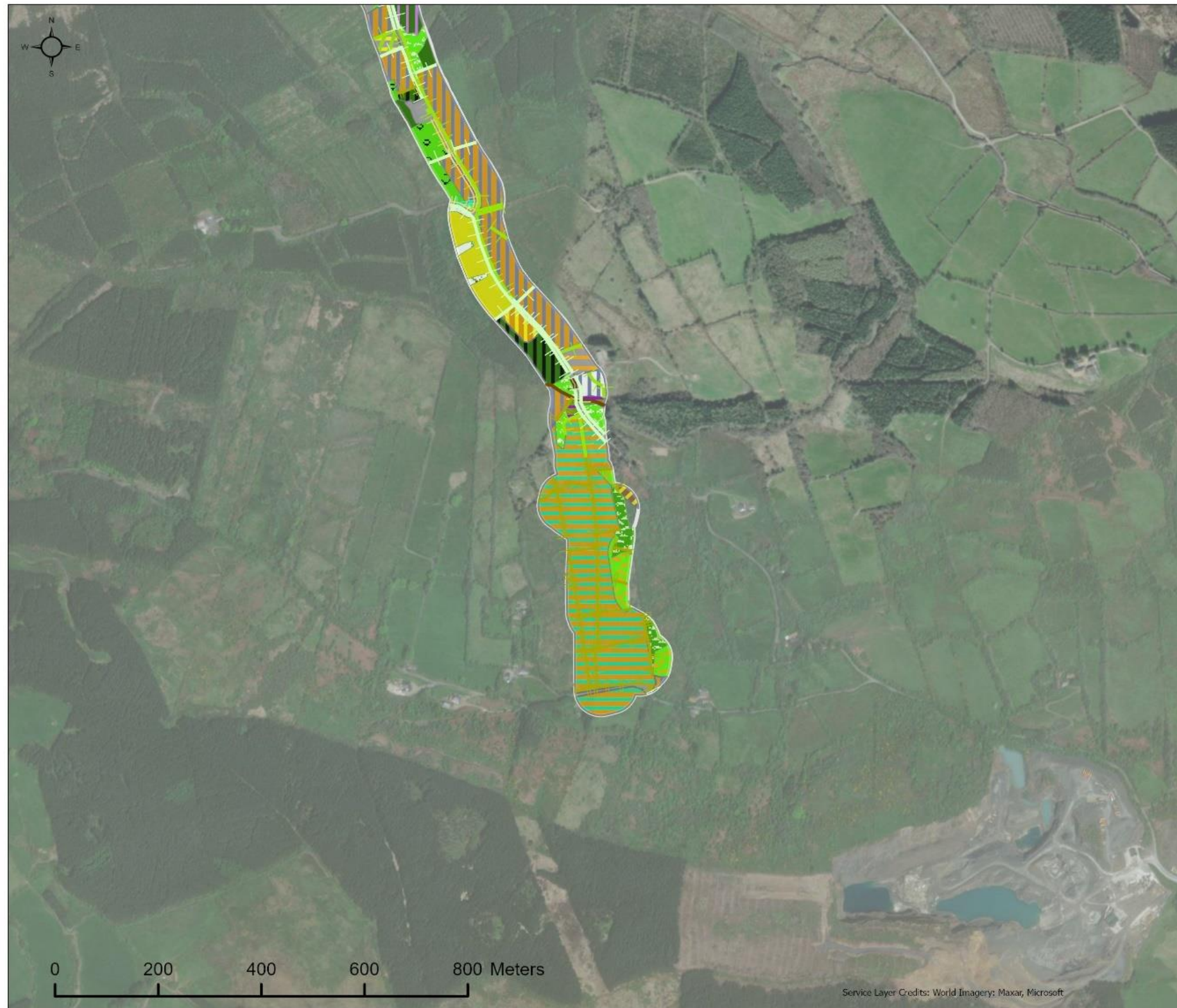




Figure 7.8: Grid connection route



Client: Orsted

Project: Oatfield

Title: Habitats

**Legend:**

BL2 Earth banks	GA1/GS4 Improved agricultural grassland/Wet grassland
BL2/WL1 Earth banks/Hedgerows	GS3 Dry-humid acid grassland
BL2/WL1/WL2 Earth banks/Hedgerows/Treelines	GS3/WS1 Dry-humid acid grassland/Scrub
FW4 Drainage ditches	GS4 Wet grassland
WL1 Hedgerows	GS4/WS1 Wet grassland/Scrub
WL1/WL2 Hedgerows/Treelines	HD1/WS1 Dense bracken/scrub
WL2 Treelines	WD1 Broadleaved woodland
BL3 Buildings and artificial surfaces	WD3 Conifer woodland
BL3/GA2 Buildings and artificial surfaces/Amenity grassland	WD4 Conifer plantation
BL3/GS4 Buildings and artificial surfaces/Wet grassland	WL2 Treelines
BL3/WS2 Buildings and artificial surfaces/Immature woodland	WN6 Wet willow-alder-ash woodland
ED2 Spoil and bare ground	WS1 Scrub
GA1 Improved agricultural grassland	WS1/WS2 Scrub/Immature woodland
	WS2 Immature woodland
	Study Area

For illustrative purposes only. Map not to scale

COPYRIGHT ©  
 INIS Ecology  
 All rights reserved.No part of this work may be modified or reproduced or copied in any form or by any means - graphics, electronic or mechanical, including photocopying, recording, taping or information-and retrieval system, or used for any purpose than its designed purpose, without written permission of INIS Environmental Consultants Ltd.

Date:	Revision:	Drawn	Checked	Authorised
15/12/23	2230E- AP - 10_008	DMC	CB	AC

**Inis** | E: info@inisev.ie  
 W: www.inisecology.com  
 W: www.inisev.ie

INIS Ecology  
 Suite 16, Block A,  
 Clare Technology Park, Gort Road,  
 Ennis, Co. Clare



Figure 7.9: Otter Survey Results

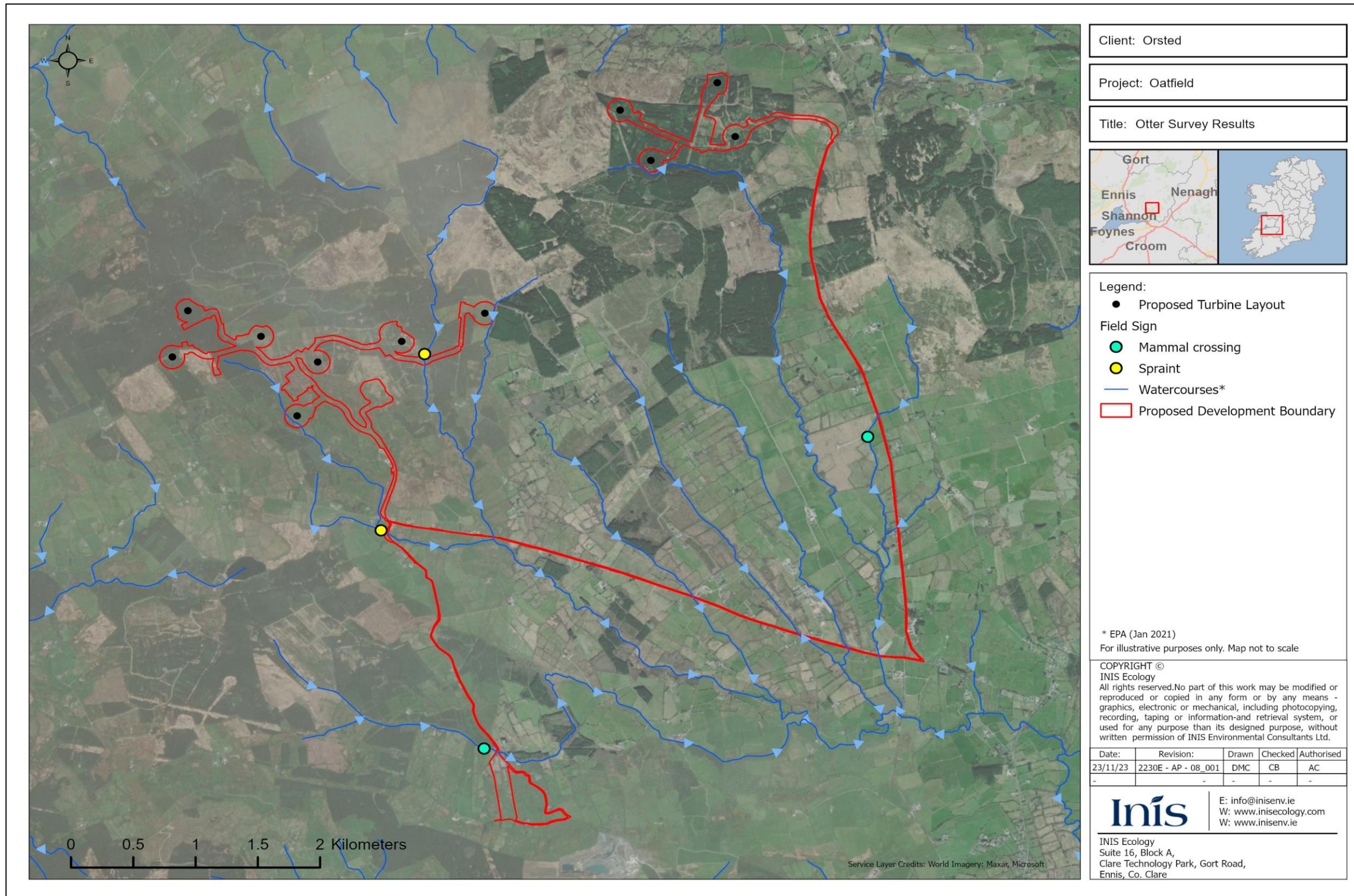
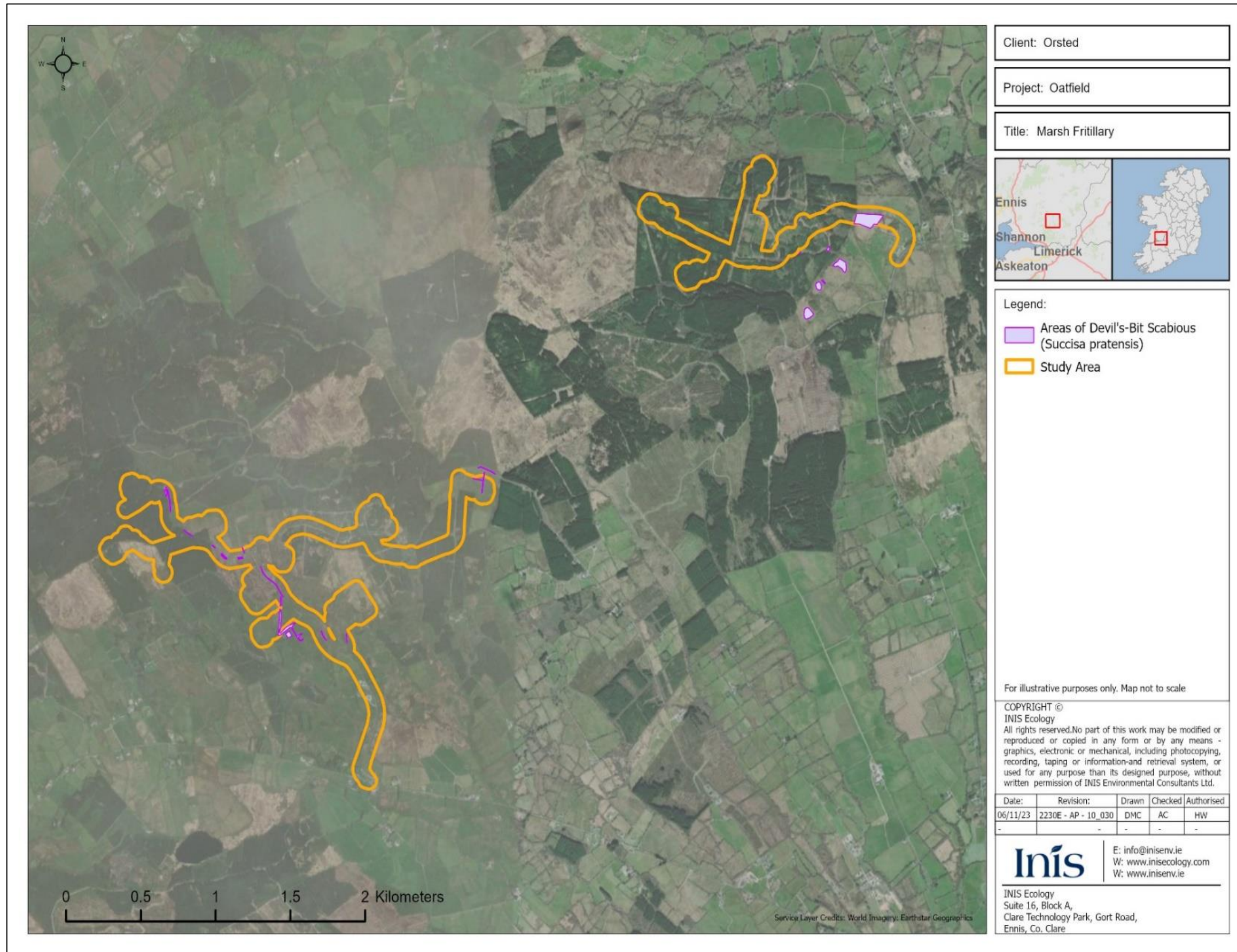




Figure 7.10: Marsh Fritillary Survey Results



Client: Orsted

Project: Oatfield

Title: Marsh Fritillary



Legend:

- Areas of Devil's-Bit Scabious (*Succisa pratensis*)
- Study Area

For illustrative purposes only. Map not to scale

COPYRIGHT ©  
 INIS Ecology  
 All rights reserved. No part of this work may be modified or reproduced or copied in any form or by any means - graphics, electronic or mechanical, including photocopying, recording, taping or information and retrieval system, or used for any purpose than its designed purpose, without written permission of INIS Environmental Consultants Ltd.

Date:	Revision:	Drawn	Checked	Authorised
06/11/23	2230E - AP - 10_030	DMC	AC	HW
-	-	-	-	-

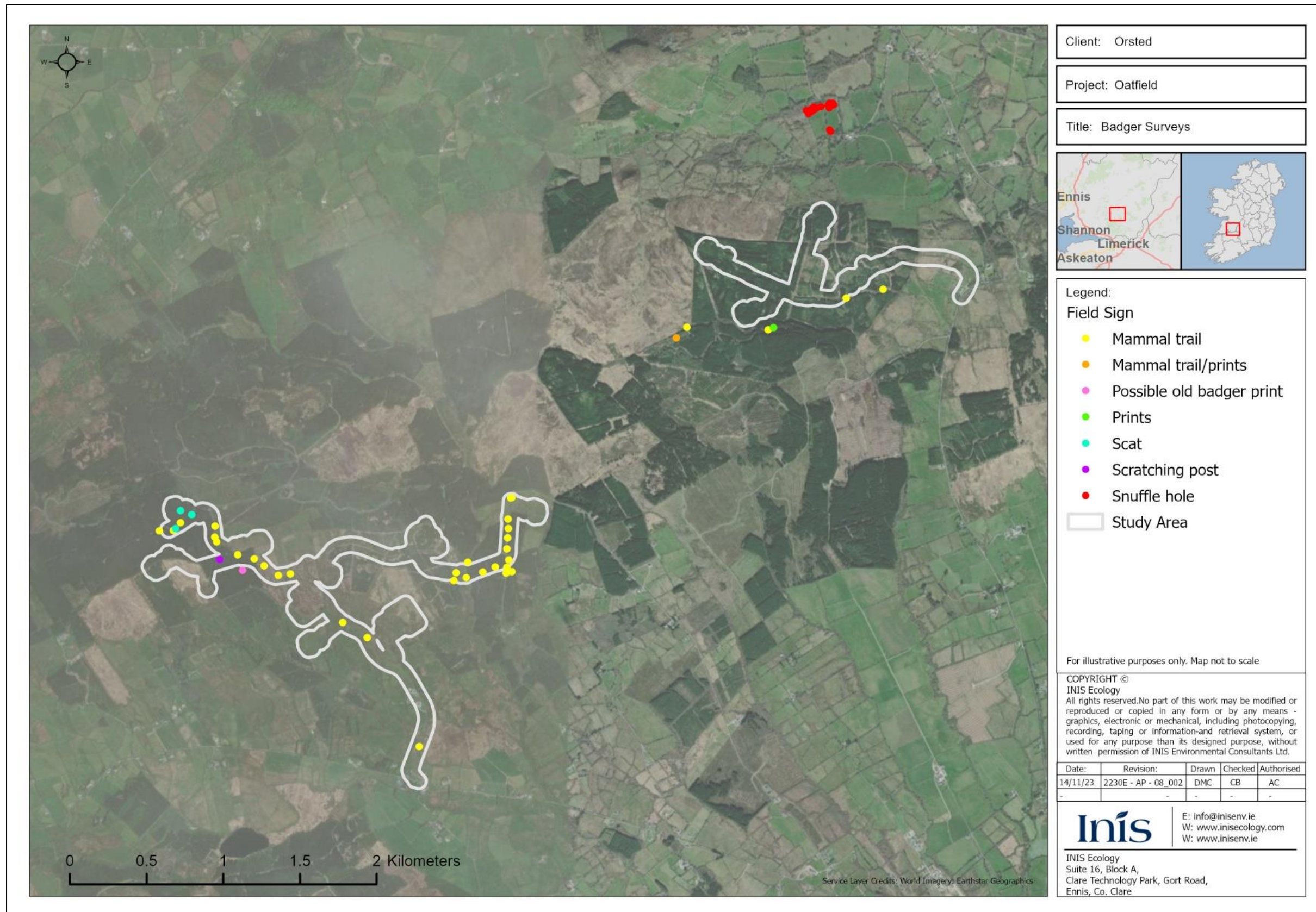
**Inis** | E: info@inisenv.ie  
 W: www.inisecology.com  
 W: www.inisenv.ie

INIS Ecology  
 Suite 16, Block A,  
 Clare Technology Park, Gort Road,  
 Ennis, Co. Clare

Service Layer Credits: World Imagery: Earthstar Geographics



Figure 7.11: Badger Survey Results 2023



Client: Orsted

Project: Oatfield

Title: Badger Surveys



- Legend:
- Field Sign
- Mammal trail
  - Mammal trail/prints
  - Possible old badger print
  - Prints
  - Scat
  - Scratching post
  - Snuffle hole
  - Study Area

For illustrative purposes only. Map not to scale

COPYRIGHT ©  
 INIS Ecology  
 All rights reserved. No part of this work may be modified or reproduced or copied in any form or by any means - graphics, electronic or mechanical, including photocopying, recording, taping or information and retrieval system, or used for any purpose than its designed purpose, without written permission of INIS Environmental Consultants Ltd.

Date:	Revision:	Drawn	Checked	Authorised
14/11/23	2230E - AP - 08_002	DMC	CB	AC
-	-	-	-	-

**Inis** | E: [info@inisen.ie](mailto:info@inisen.ie)  
 W: [www.inisecology.com](http://www.inisecology.com)  
 W: [www.inisenv.ie](http://www.inisenv.ie)

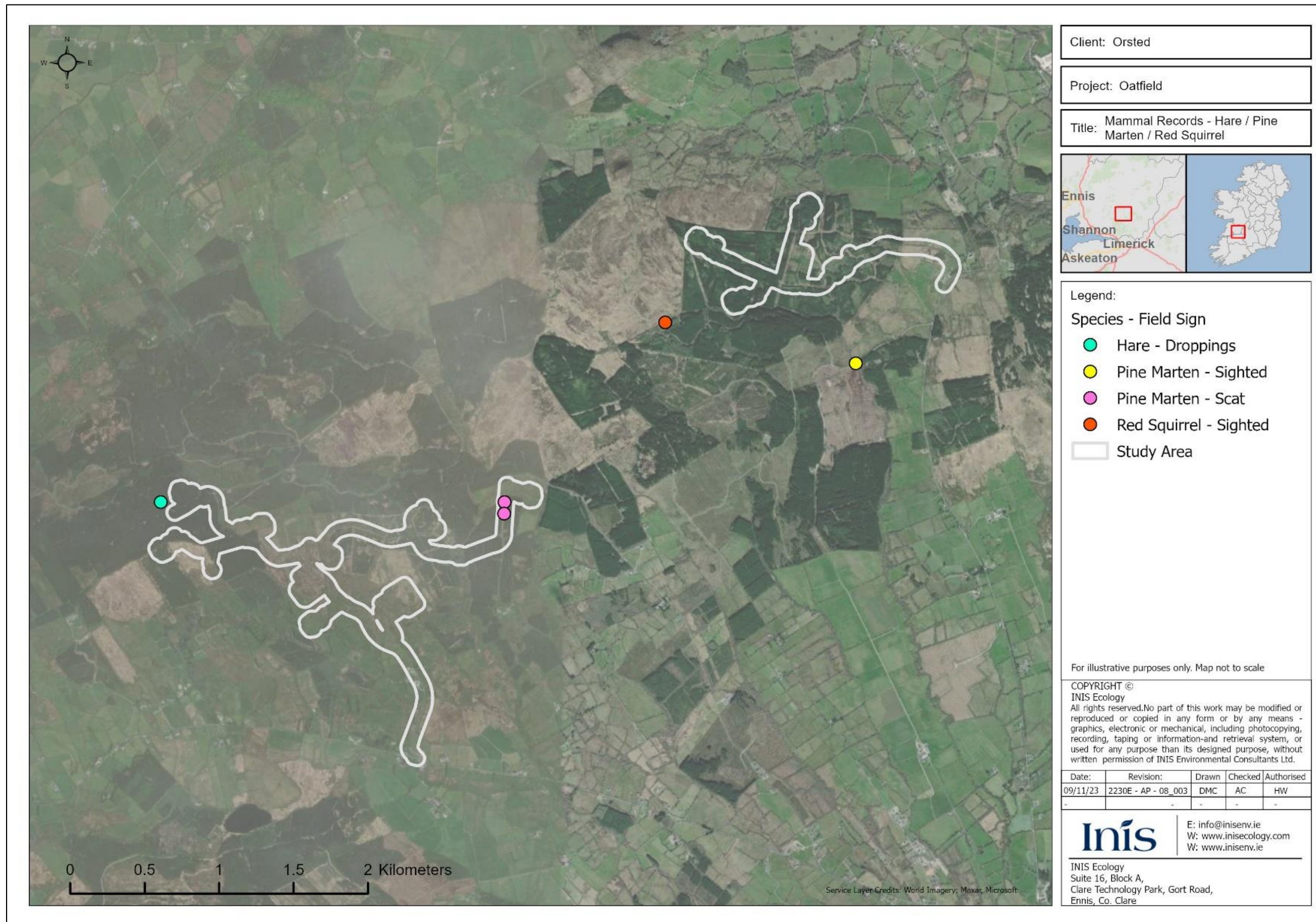
INIS Ecology  
 Suite 16, Block A,  
 Clare Technology Park, Gort Road,  
 Ennis, Co. Clare

0 0.5 1 1.5 2 Kilometers

Service Layer Credits: World Imagery: Earthstar Geographics



Figure 7.12: Other Terrestrial Mammal Survey Results



Client: Orsted

Project: Oatfield

Title: Mammal Records - Hare / Pine Marten / Red Squirrel



- Legend:
- Species - Field Sign
- Hare - Droppings
  - Pine Marten - Sighted
  - Pine Marten - Scat
  - Red Squirrel - Sighted
  - Study Area

For illustrative purposes only. Map not to scale

COPYRIGHT ©  
 INIS Ecology  
 All rights reserved. No part of this work may be modified or reproduced or copied in any form or by any means - graphics, electronic or mechanical, including photocopying, recording, taping or information and retrieval system, or used for any purpose than its designed purpose, without written permission of INIS Environmental Consultants Ltd.

Date:	Revision:	Drawn	Checked	Authorised
09/11/23	2230E - AP - 08_003	DMC	AC	HW

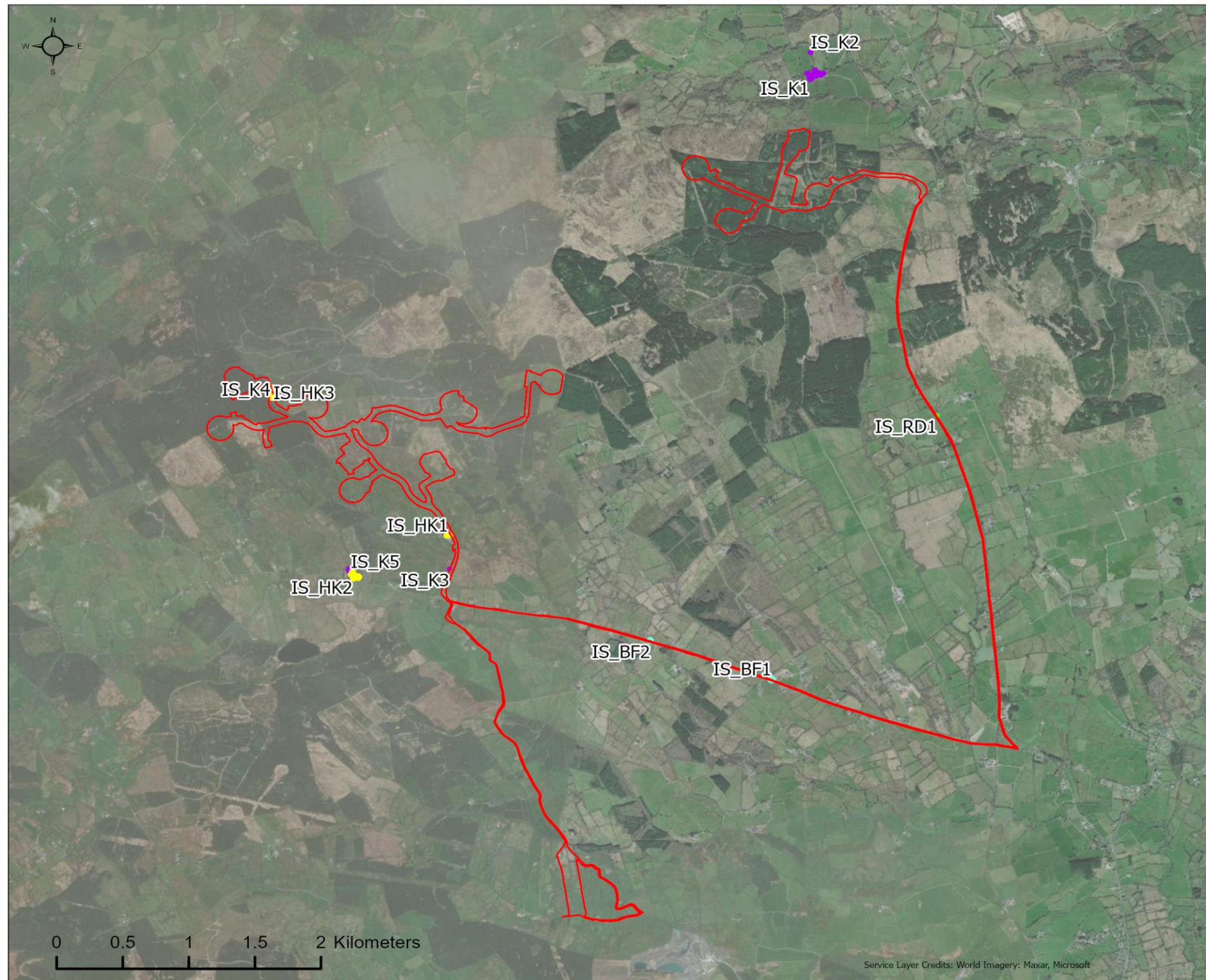
**Inis** | E: info@inisenvironment.ie  
 W: www.inisecology.com  
 W: www.inisenvironment.ie

INIS Ecology  
 Suite 16, Block A,  
 Clare Technology Park, Gort Road,  
 Ennis, Co. Clare

Service Layer Credits: World Imagery: Maxar, Microsoft



Figure 7.13: Invasive Species Map



Client: Orsted

Project: Oatfield

Title: Invasive Species



- Legend:
- Proposed Development Boundary
  - Butterfly bush (*Buddleja davidii*)
  - Himalayan Knotweed (*Koenigia polystachya*)
  - Japanese Knotweed (*Fallopia japonica*)
  - Rhododendron (*Rhododendron ponticum*)

For illustrative purposes only. Map not to scale

COPYRIGHT ©  
 INIS Ecology  
 All rights reserved. No part of this work may be modified or reproduced or copied in any form or by any means - graphics, electronic or mechanical, including photocopying, recording, taping or information and retrieval system, or used for any purpose than its designed purpose, without written permission of INIS Environmental Consultants Ltd.

Date:	Revision:	Drawn	Checked	Authorised
14/12/23	2230E - AP - 10_031	DMC	CB	AC
-	-	-	-	-

**Inis** | E: [info@inisen.ie](mailto:info@inisen.ie)  
 W: [www.inisecology.com](http://www.inisecology.com)  
 W: [www.inisen.ie](http://www.inisen.ie)

INIS Ecology  
 Suite 16, Block A,  
 Clare Technology Park, Gort Road,  
 Ennis, Co. Clare

Service Layer Credits: World Imagery: Maxar, Microsoft



Figure 7.14: EU Designated Sites within the Zol of the Proposed Development

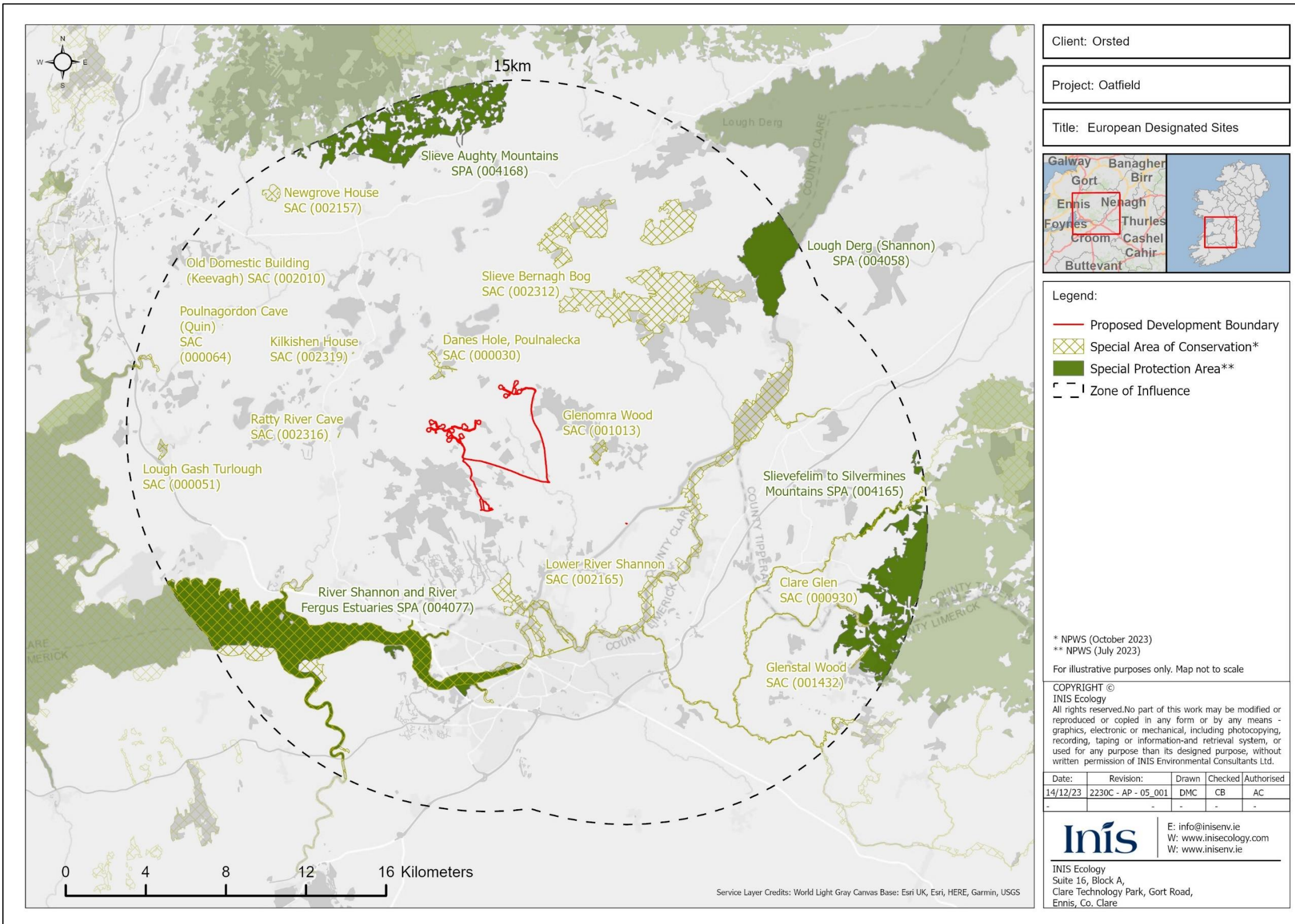




Figure 7.15: Nationally Designated Sites within the ZOI of the Proposed Development

